

COMPANY CAPABILITY STATEMENT



QueenslandGlass

Delivering Complete Glazing Solutions to the Building Industry



CONTENTS

Company Overview	3
Capabilities	4
Management Systems	7
Value Proposition	8
Financial Success	10
Senior Management Profiles	13
Organisational Chart	14
Mission	16
Vision	17
Contact Us	18



BUILD+
CONSTRUCT

Company Overview

“To build and maintain a satisfied customer base through delivering superior quality service, with fair dealings based on trust and respect and create long term relationships with customers, suppliers, and most importantly, employees.”

Queensland Glass is a specialist contractor offering services in design, install of glazing, aluminium, automatic operators, film and window treatment. Our team works with industry and government agencies to deliver cost effective solutions - meeting a broad range of projects, from fit-outs and refurbishments, to expert architectural solutions and large scale external projects.

Our company was founded in 1992, has 80+ direct employees and an incredibly experienced management team. We pride ourselves on the excellent total service we provide. Few companies in the our industry can provide the same calibre of expertise as Queensland Glass.

Our unified management structure and staffing capability includes a team of Project Managers and Tradespeople who integrate superior workmanship with personalised service - adhering to the highest quality assurance standards. Regardless of a project's size or complexity, our expertise allows for customised requirements to meet project programme and budget parameters. Queensland Glass creates successful outcomes for our clients with consistency.

Queensland Glass provides increased operating efficiency to service installations in Queensland and Northern New South Wales through the consolidation of our operations to a single base of operations in the Port of Brisbane. The strength of the Queensland Glass brand name, our reputation for excellence and our advantageous location provide us with a sustainable competitive advantage and opportunity for future expansion.

Our company acknowledges the importance of a high level of responsiveness and efficiency, as reflected in our structure and core values. Whether managing standard sized projects to multi-million dollar ventures. Our impressive works spread across a broad range of sectors and a diverse group of builders - With a proven track record of ensuring our clients meet their contractual obligations.

regards our decision to consolidate the company's operations onto a single site in Lytton, Queensland, a strategic move,

Queensland Glass is proud to be associated with the following projects:

- | | |
|---|--|
| + Gold Coast Airport | + Queens Wharf |
| + Logan Hospital Expansion | + Gold Coast Airport |
| + Caboolture Hospital | + Rio Tinto |
| + Brisbane Grammar School (STEAM) | + Suncorp Stadium |
| + Gatton Correctional Centre | + Brisbane Airport Skylight Replacement 1,500sqm |
| + Brisbane Lions Training Facility (Brighton Homes Arena) | + Rockhampton Art Gallery 1,200sqm |
| + Commonwealth Games Village 20,000sqm | + Gold Coast Art Gallery (HOTA) 1,000sqm |
| + Sunshine Coast University Hospital 10,000sqm | + Jewel 8,200sqm |
| + Newstead Series Apartments 9,700sqm | |
| + Jupiters Casino Suites 6,700sqm | |

Capabilities

Queensland Glass' primary operations are the supply and installation of glass and glazing systems - including applied film. We provide these services across a broad customer base and have the expertise to supply and install virtually any type of glass or aluminium window into any area. Our key service offering include:

- + Aluminium windows and doors
- + Glass awnings
- + Internal glazing to partitions
- + Glass Balustrade
- + Curtain wall systems
- + Heritage work
- + Frameless glass wall systems and spider fittings
- + Architectural glazing solutions
- + Applied film/environmental graphics

Additionally, we offer effective design solutions and manage a diversity of projects from heritage work through to curtain walling systems.

Over the years we have developed strong supply chain partnering for our company with repeat business from our client base, becoming the glazier of choice for many Tier 1 Builders.

In house, our experienced estimating team can assist clients with design, glass types and performance to ensure that the project meets all the relevant codes. We pride ourselves on our flexible and collaborative approach and remain uncompromising in the delivery of optimum results.

Partition Glazing

Queensland Glass is recognised as the industry leader in this field. With over 25 years dedicated experience in this field, having collaborated on major projects, delivering partition glazing effectively and efficiently.

Our professional approach to even the most complex and difficult projects has earned Queensland Glass industry respect. From architects, designers and builders, placing our company in the enviable position as the glazier of choice for high risk or high detailed project.

Commercial Windows and Doors

Queensland Glass has access to the full range of extruded aluminium suites enabling our company to provide installed product to projects requiring for example:

- + Shop front facades
- + Hi-rise window frames
- + Curtain wall
- + Awnings
- + Engineered window solutions

In our 9,000sqm state of the art facility at the Port of Brisbane, Lytton, we manufacture windows and doors ready to deliver to site. Each item is passed through a stringent quality control check prior to leaving the factory.

A low-angle, upward-looking shot of a modern glass skyscraper. The building's facade is composed of a grid of dark metal frames and large glass panels. The glass reflects the sky and clouds, but the central focus is the reflection of a classical building. This reflected building features a large, ornate dome with a green patina, likely copper. Below the dome, there are several stories of the building with arched windows, decorative stone carvings, and a balcony with a balustrade. The modern building's structure is visible in the foreground, with the glass panels creating a grid pattern over the reflection. The overall composition suggests a contrast between old and new architecture.

CAPABILITIES



**+MANAGEMENT
SYSTEMS**

Management Systems

Workplace Health and Safety

Queensland Glass is fully committed to:

- + Ensuring a safe workplace for all of its employees
- + Continually striving to improve safety performance
- + Instilling a no harm cultural mindset in the company where safety is respected

This is achieved by identifying and rectifying unsafe conditions or practices, while promoting safe work practices. Our team recognises that in order to achieve an outstanding record of safety, we must operate to best practice and have a systematic and preventative safety system.

We have a committed management team and a pro-active workforce that applies our safety system across the business. Our systems are in full compliance with Workplace Health and Safety Legislation. All employees and subcontractors are fully engaged in the system and are regularly made aware of their responsibilities through company and project specific inductions, toolbox meetings, Safe Work Method Statements, and Job Safety and Environment Assessments. Our Safety System is certified to AS/NZS 4801:2001

Environmental Management

Queensland Glass is fully aware of the sensitive nature of our environment and communities in which we operate. We work with stakeholders to reduce the impact of waste where possible, through recycling and re-use. All projects are run in compliance with our ISO 14001:2015 certification and specific conditions of the project approvals and requirements.

Quality Assurance

Queensland Glass is registered as a quality endorsed company with SAI Global. Our quality system and procedures are certified to ISO 9001:2015.

Independent third party audits are conducted across our system and structured internal audits are performed to ensure ongoing compliance and continual improvement to our systems and procedures.

A quality plan has been developed that covers all aspects of administration and management, work methods, document control, inspections and testing, and compliance check sheets.

Our quality system and the system instructions are subject to continuous improvement through ongoing review, and all employees are encouraged to submit change proposals to our System Manager who distributes such requests to other users for review/comment/approval prior to any subsequent implementation.

Queensland Glass approaches its management system holistically to cover Workplace Health and Safety, Environment, and Quality Assurance Management, with all systems and procedures being available to all of our employees via our IT system.

Value Proposition







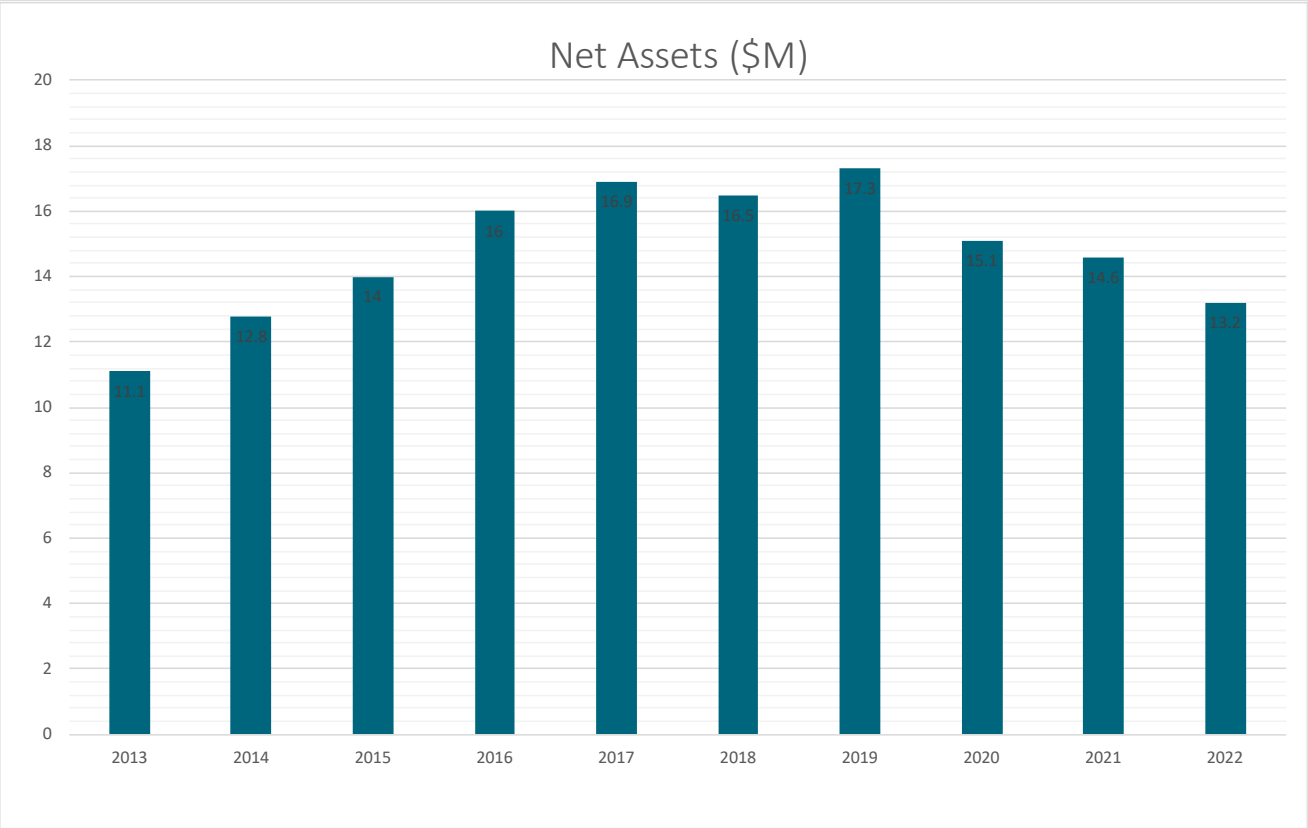
FINANCIAL

Financial Success

“To build and maintain a satisfied customer base through delivering superior quality service, with fair dealings based on trust and respect and create long term relationships with customers, suppliers, and most importantly, employees.”

The continued successful growth of Queensland Glass is reflected in the financial performance of the company and our ability to consistently deliver a strong financial outcome over an extended period of time.

As a progressive company, we plan for long-term sustainability, however, no one is clear what tomorrow will bring. Therefore, to manage uncertainty we are committed to building our capability to respond to future demands.



Senior Management Profiles

Daniel Wigan - Managing Director

Daniel started with the company in 2004 as Commercial Manager and was recently appointed Managing Director. He has a law degree (LLB), an international business degree (INTBUS) and a Masters of Business Administration (MBA).

Daniel has proven experience in improving processes that result in reduced costs, higher quality and customer satisfaction.

In addition to overseeing day-to-day operations, Daniel provides commercial support along with effective insights on performance and risk mitigation as well as delivering on all business financial and regulatory compliance obligations.

Nicholas Imbrogno - Operations Manager

Nicholas' experience is concentrated in Business Operations / General Business / Management Activities and Functions, with exposure in Design / Engineering / Fabrication. With more than 30+ years of experience in Southeast Asia, Middle East and Australia.

Involved in numerous projects within Southeast Asia, Middle East, and Australia. Able to design and document external cladding systems, layouts for Architects, developers, owners, and co-ordinate with local and international aluminium sub-contractors. Able to operate and manage design/engineering office with the ability to carrying out factory and site inspections. Having a good knowledge of Curtain Walls and Cladding systems and able to specify which components are more suitable than others. A vast experience with the Southeast Asian market in procuring correct components required to meet the clients or consultants aesthetic and performance criteria

David Mills - Production Manager

David has held the role of Production Manager since 2004. Prior to this he was working for Queensland Glass as a glazier/fitter. David has overseen the expansion from a small fabrication facility to one that now occupies a 9,000m² facility capable of turning out \$1M product per month. David's attention to detail and analytic approach to managing the factory produces a consistent, quality product.

David has a Certificate III in Glass and Glazing and holds a QBCC Supervisor Licence, Bulletproof Management training. He also has a Certificate IV in OHS and Certificate IV in Project Management.

Jamie Wheeler - Estimating Manager

Jamie has been with Queensland Glass since 2014 and has 15 years of extensive experience within the facade industry, both overseas and in Australia. With over 10 years' experience in preparing estimates, task management and contract negotiation, Jamie's customer-focused approach and broad knowledge base is invaluable when offering our clients comprehensive solutions for their projects.

Jamie has completed the Australian Window Association Standards and Regulations course and holds a Cert IV in Project Management. As the Estimating manager, Jamie is on the front line of our business, utilizing his experience and knowledge to help tailor project submissions, maintain existing and build new relationships.

Phil Dicks - Design Manager

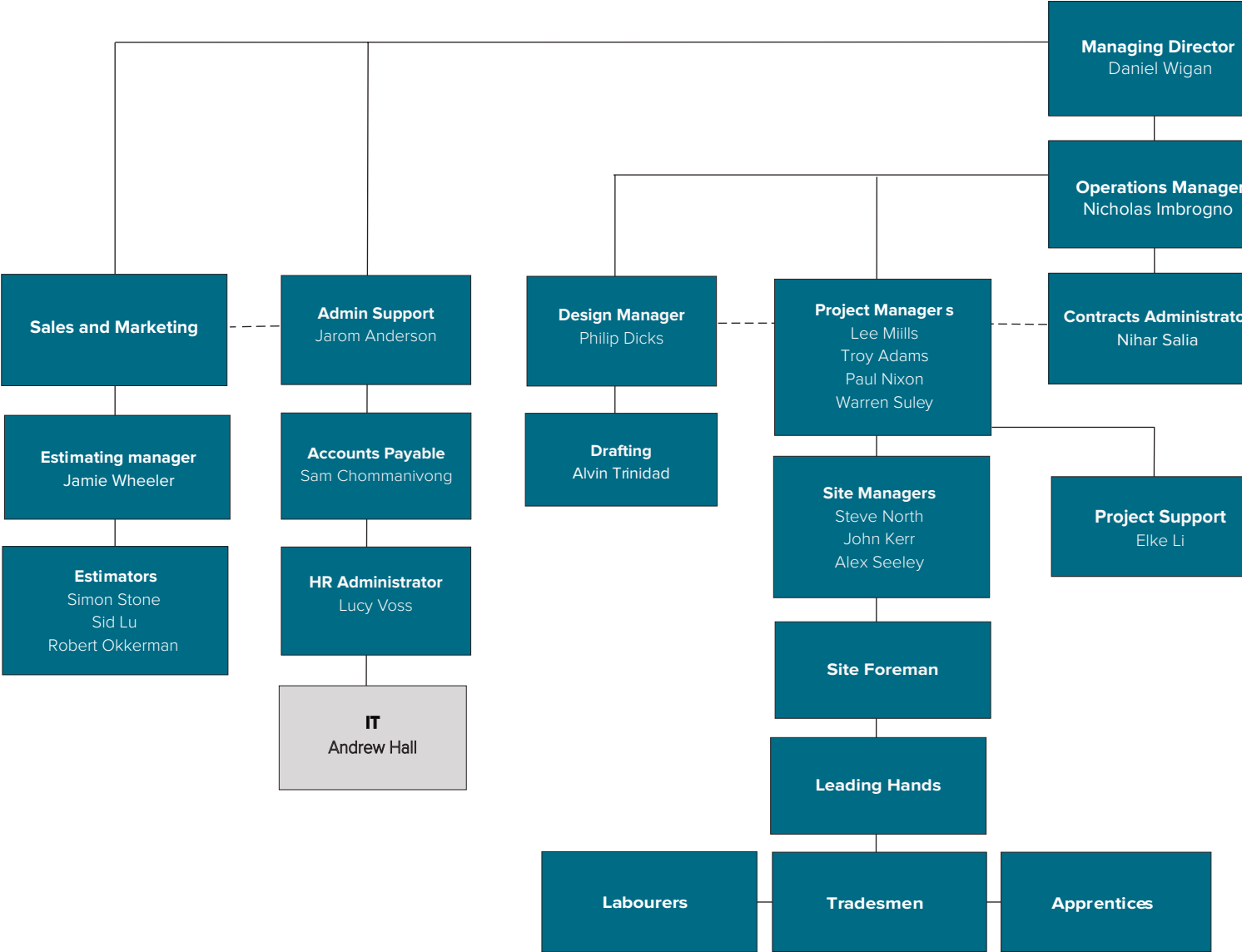
Philip started with Queensland Glass in early 2022 as Design Manager. Philip has significant industry experience working in senior design roles within highly regarded building and development companies. Over the past 20 plus years, Philip has worked across a wide range of projects and disciplines. Philip's experience is invaluable in allowing our projects to run more efficiently, and he has a passion for design and the use of BIM within a project enables our clients' concepts and design vision to be implemented more effectively.

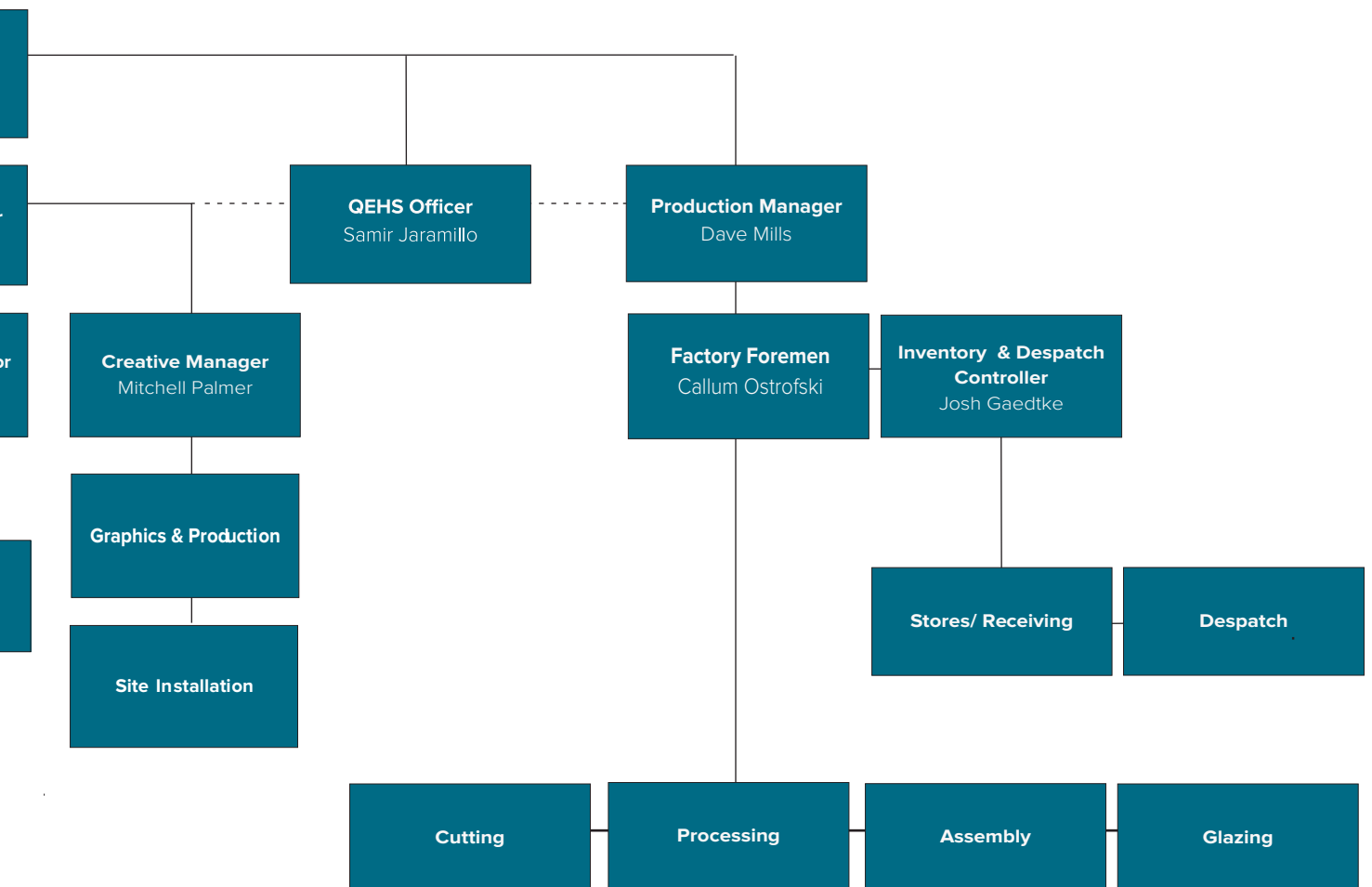
Philip served his design apprenticeship in the UK and achieved Higher National diplomas in Building design and Civil Engineering. Philip is highly qualified in the use of AutoCAD, Revit, Navisworks, and Tekla.



OUR PEOPLE

Organisational Chart





MISSION

Our mission is to provide high quality, innovative solutions in a way that gives value for money and exceeds our customers' expectations.





VISION

Queensland Glass inspires its employees to be the best they can be through continuous improvements of our service and delivery. We will engage in sustainable practices and anticipate the needs of our customers. We will maximize returns to our shareholders while still

Contact Us

8 Radar St Lytton QLD 4178
PO Box 253 Cannon Hill QLD 4170
Phone: +61 7 3890 6099
queenslandglass.com.au

ESTIMATING MANAGER

Jamie Wheeler
Contact Number: 0403 289 846
Email: Jamie.wheeler@queenslandglass.com.au

OPERATIONS MANAGER

Nicholas Imbrogno
Contact Number: 0449 210 507
Email: Nicholas.Imbrogno@queenslandglass.com.au