

# Capability Statement



QueenslandGlass

Delivering Complete Glazing Solutions to the Building Industry





# Contents

Company Overview	3
Capabilities	4
Management Systems	7
Value Proposition	8
Financial Success	10
Senior Management Profiles	13
Organisational Chart	14
Mission	16
Vision	17
Contact Us	18





## Company Overview

“To build and maintain a satisfied customer base through delivering superior quality service, with fair dealings based on trust and respect and create long term relationships with customers, suppliers, and most importantly, employees.”

Queensland Glass is a specialist contractor involved in the design, and installation of glazing, aluminium and decorative window treatment services. Our team has worked with industry and government agencies to deliver cost effective solutions to meet a broad range of projects from shop and office fit-outs, through foyer refurbishments, to expert architectural solutions and large scale external projects.

We have a proven track record in ensuring our clients meet their contractual obligations.

The company, which was founded in 1992 and has 80+ direct employees, prides itself on the excellence of the total service it provides to its customers. Only a few companies today in the glass and architectural aluminium industry can provide the same level of capability as Queensland Glass and deliver a turnover in excess of \$35 million per annum.

A unified management structure and staffing capability comprises a team of Project Managers and Tradespeople who combine superior workmanship with personalised service and adhere to internal quality assurance standards. Regardless of a project's size or complexity, our expertise allows for customised requirements

to meet project programme and budget parameters, creating successful outcomes for our clients.

Queensland Glass regard their decision to consolidate the company's operations onto a single site in Lytton, Queensland, a strategic move, providing increased operating efficiency to service installations throughout Queensland and into Northern New South Wales. The strength of the Queensland Glass brand name, a reputation for excellence within the construction industry and location, provide the company with a sustainable competitive advantage and opportunities for future expansion.

Our company structure and values recognise the importance of a high level of responsiveness, whether we are managing a standard sized project through to multi-million dollar ventures, across a broad range of sectors to a diverse group of builders.

Queensland Glass is proud to be associated with the following projects:

- + Jewel 8,200sqm
- + Autohaus 3,700sqm
- + Clarence Correctional 6,200sqm
- + Commonwealth Games Village 20,000sqm
- + Sunshine Coast University Hospital 10,000sqm
- + Newstead Series Apartments 9,700sqm
- + Blue Sky Student Accommodation 7,300sqm
- + Jupiters Casino Suites 6,700sqm
- + Pullman Ibis 4,000sqm
- + MODE Apartments 3,000sqm



# Capabilities

Queensland Glass mainstream operations are the supply and installation of glass and glazing systems including applied film. We provide these services across a broad customer base and have the experience and expertise to supply and install virtually any type of glass or aluminium window into any area. Our key service offering includes:

- + Aluminium windows and doors
- + Glass awnings
- + Internal glazing to partitions
- + Glass Balustrade
- + Curtain wall systems
- + Heritage work
- + Frameless glass wall systems and spider fittings
- + Architectural glazing solutions
- + Applied film/environmental graphics

We are able to offer design solutions to practical challenges and we are one of the few companies that can manage a diversity of projects from heritage work through to curtain walling systems.

Over the years we have developed strong supply chain partnering for our company with repeat business from our client base, becoming the glazier of choice for many Tier 1 Builders.

Our in house, experienced estimating team can assist clients with design, glass types and performance to ensure that the project meets all the relevant codes. While we pride ourselves on our flexible, collaborative and consensual approach we remain uncompromisingly focused on delivering optimum results.

**Partition Glazing**

Queensland Glass is recognised as the industry leader in this field. With over 25 years dedicated experience in this field, our company has collaborated on major projects, delivering partition glazing effectively and efficiently.

Our professional attitude and approach to even the most complex and difficult projects, has earned Queensland Glass respect from architects, designers and builders, placing our company in the enviable position as the glazier of choice for any high risk or high detailed project.

- Commercial Windows and Doors**
- Queensland Glass has access to the full range of extruded aluminium suites enabling our company to provide installed product to projects requiring for example:
- + Shop front facades
  - + Hi-rise window frames
  - + Curtain wall
  - + Awnings
  - + Engineered window solutions

From our 9,000sqm state of the art facility at the Port of Brisbane, Lytton, we manufacture windows and doors ready to deliver to site. Each item is passed through a stringent quality control check prior to leaving the factory.

Queensland Glass has successfully completed many projects.



Pullman Ibis Conference Centre





Atira Toowong

# Management Systems

## Workplace Health and Safety

Queensland Glass is fully committed to:

- + Ensuring a safe workplace for all of its employees
- + Continually striving to improve safety performance
- + Instilling a cultural mindset in the company to achieve a no harm work environment

This is achieved by identifying and rectifying any unsafe work conditions or practices, as well as promoting safe work practices. Our team recognises that in order to achieve an outstanding record of safety, we must operate to best practice and have a systematic safety system.

We have a committed management team and a pro-active workforce that drives our comprehensive safety system across the business. Our systems are in full compliance with Workplace Health and Safety Legislation. All employees and subcontractors are fully engaged in the system and are regularly made aware of their responsibilities through company and project specific inductions, toolbox meetings, Safe Work Method Statements, and Job Safety and Environment Assessments. Our Safety System is certified to AS/NZS 4801:2001

## Environmental Management

Queensland Glass is fully aware of the sensitive nature of our environment and communities in which we operate. We work with stakeholders to reduce the impact of waste where possible, through recycling and re-use. All projects are run in compliance with our ISO 14001:2015 certification and specific conditions of the project approvals and requirements.

## Quality Assurance

Queensland Glass is registered as a quality endorsed company with SAI Global. Our quality system and procedures are certified to ISO 9001:2015.

Independent third party audits are conducted across our system and structured internal audits are performed to ensure ongoing compliance and continual improvement to our systems and procedures.

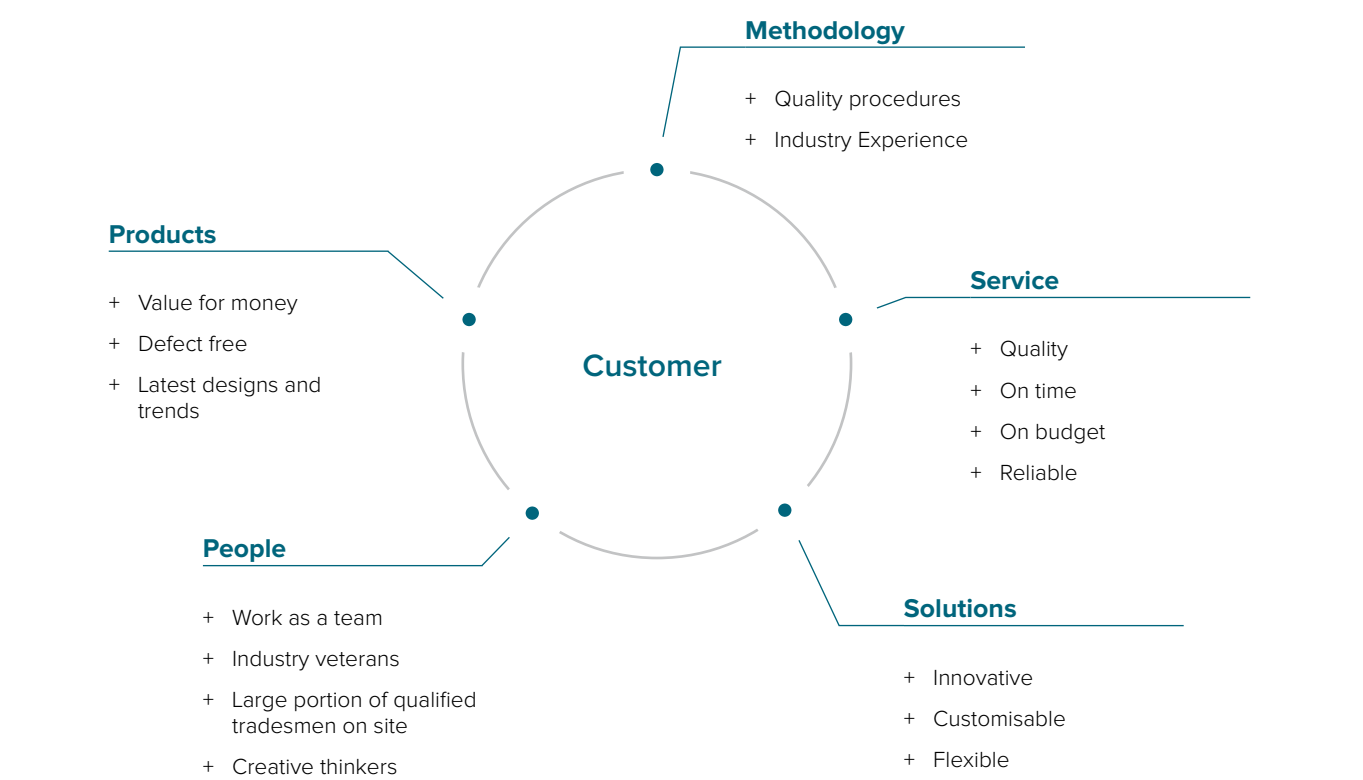
A quality plan has been developed that covers all aspects of administration and management, work methods, document control, inspections and testing, and compliance check sheets.

Our quality system and the system instructions are subject to continuous improvement through ongoing review, and all employees are encouraged to submit change proposals to our System Manager who distributes such requests to other users for review/comment/approval prior to any subsequent implementation.

Queensland Glass approaches its management system holistically to cover Workplace Health and Safety, Environment, and Quality Assurance Management, with all systems and procedures being available to all of our employees via our IT system.



# Value Proposition



The W Hotel



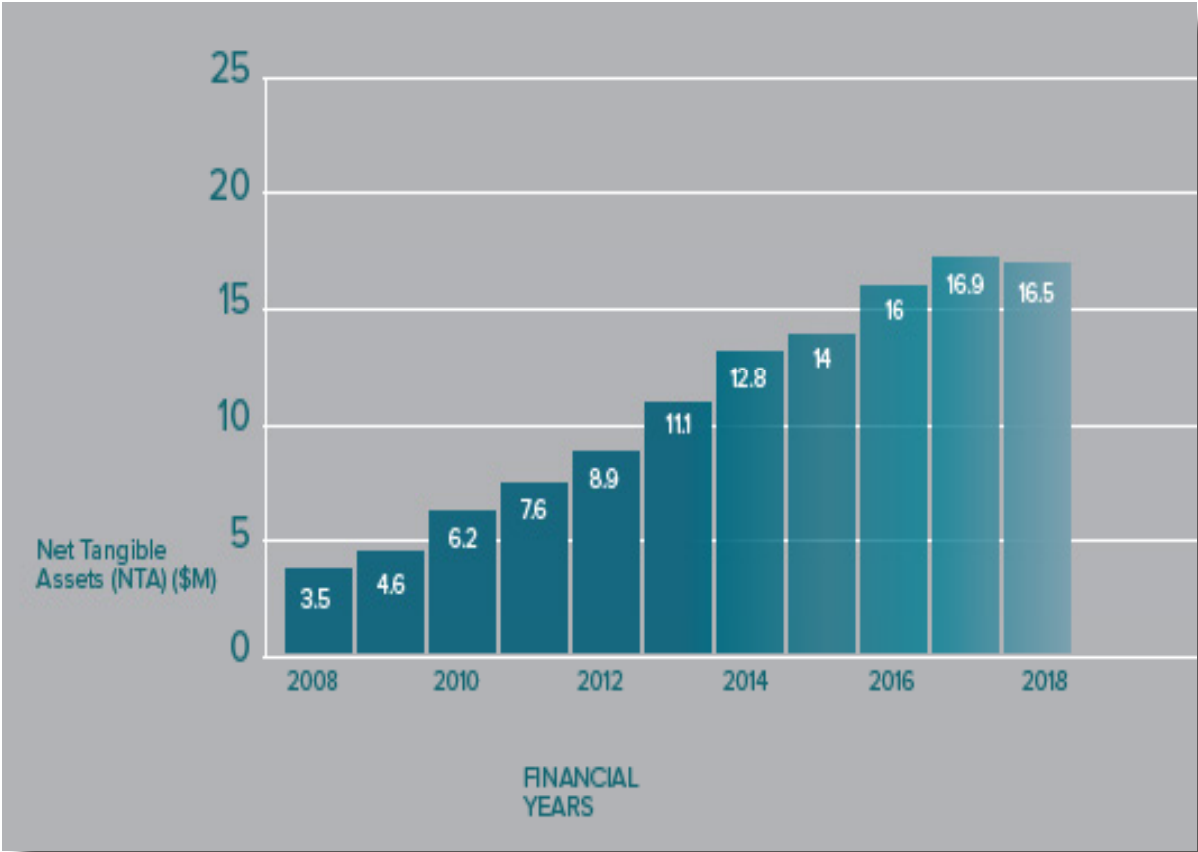
# Financial Success

“To build and maintain a satisfied customer base through delivering superior quality service, with fair dealings based on trust and respect and create long term relationships with customers, suppliers, and most importantly, employees.”

The continued successful growth of Queensland Glass is reflected in the financial performance of the company and our ability to consistently deliver a strong financial outcome over an extended period of time.

As a progressive company, we plan for long-term sustainability, however, no one is clear what tomorrow will bring. Therefore, to manage uncertainty we are committed to building our capability to respond to future demands.

On average, Queensland Glass has delivered an average of 15% growth in revenue year on year and we are forecast to continue this positive trend.







# Senior Management Profiles

## Nigel Mills - Managing Director

Nigel is one of the founding shareholders of Queensland Glass. Initially responsible for Sales and Operations, Nigel has been the Managing Director of Queensland Glass since 2000.

Nigel has a Diploma of Building, an Associate Diploma of Applied Science (Building) and a Certificate III in Glass and Glazing. Nigel is Queensland Glass's nominee for the Queensland Building and Construction Commission (QBCC). He is also a Member of the Australian Institute of Company Directors (MAICD).

Nigel's belief in state-of-the-art technologies and modern techniques combined with old fashion values of customer service and craftsmanship help to maintain Queensland Glass as the market leader.

## David Mills - Production Manager

David has held the role of Production Manager since 2004. Prior to this he was working for Queensland Glass as a glazier/fitter. David has overseen the expansion from a small fabrication facility to one that now occupies a 9,000m<sup>2</sup> facility capable of turning out \$1M product per month. David's attention to detail and analytic approach to managing the factory produces a consistent, quality product.

David has a Certificate III in Glass and Glazing and holds a QBCC Supervisor Licence, Bulletproof Management training. He also has a Certificate IV in OHS and Certificate IV in Project Management.

## Brendan Poole - Operations Manager

Brendan started with Queensland Glass in 2016 as Project Manager with the primary focus on large scale projects. Brendan now works in the role of Operations Manager. Brendan has over 15 years continuous management experience within the Commercial Construction and Engineering sector in Operations Management and Senior Project Management roles. Working primarily on Tier 1 & Tier 2 contracts across Australia and Internationally in various fields such as Health, Government, High Rise, Retail and Defence. Brendan has the great background knowledge with Bachelor of Engineering degree, QBCC License and numerous other leadership courses.

## Jamie Pontifex - Business Development Manager

Jamie started with Queensland Glass in 2019 as Business Development Manager. Jamie's primary focus is to align the objectives of Queensland Glass with that of our customers and to strengthen existing relationships with our customer base. Jamie has over 35 years of project management experience and his understanding of projects from start to completion gives him a unique understanding of his clients' needs. Jamie holds a QBCC open licence and an Advanced Diploma in Construction as well as completing various other in-house Sales and Management training courses.

## Roger Wilson - Product Manager

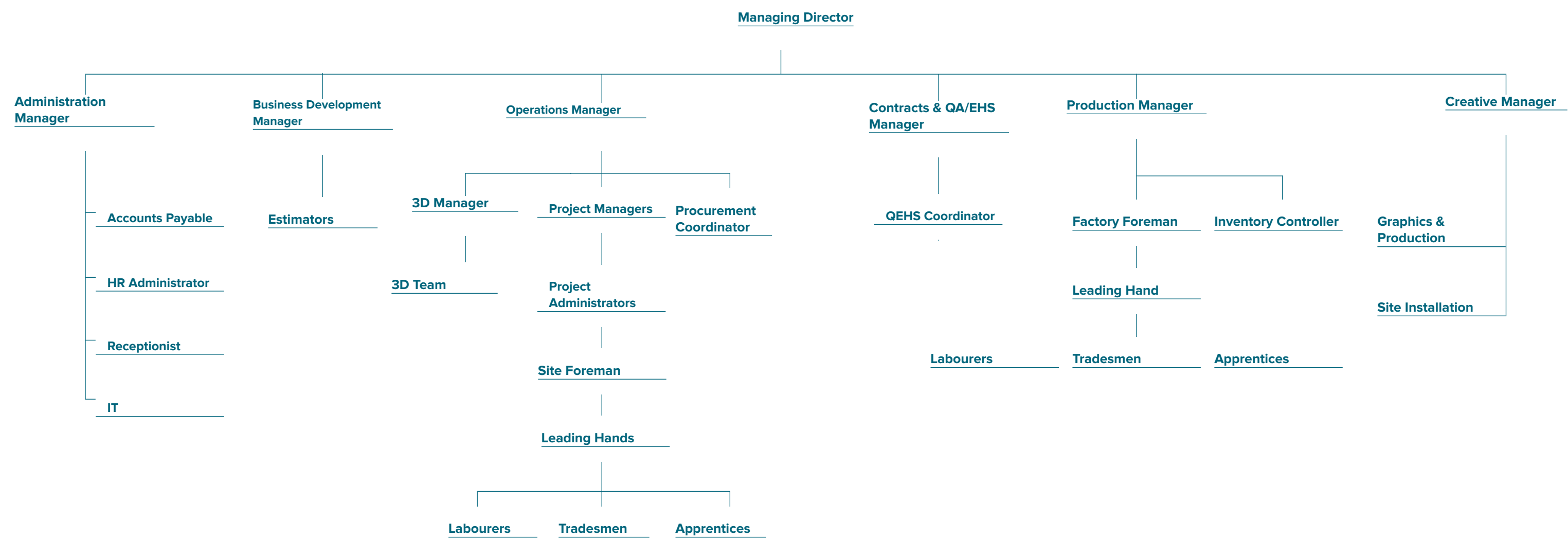
Roger joined Queensland Glass in 2014 in the role of Product Manager to further develop our ever expanding need for the supply of aluminium sunshading, screens, louvres, and facade products. Roger has been in the commercial aluminium and glass industry in South East Queensland for the past 26 years in project and operations management roles. Through this period Roger has developed a thorough knowledge of product design and installation combined with the capabilities to meet the needs required by clients to forward their ideas to fruition.

## Tara Graham - Administration Manager

Tara Joined Queensland Glass in March 2019. Tara has 10 years' experience in Contracts Administration and Office Management. Tara assists the Queensland Glass Project Managers in forecasting, financial reporting, monthly invoicing, certification of certificates and warranty and maintenance manuals. Tara is responsible for the day to day operation of the office administration. Tara has completed a Bachelor of Business and a Cert IV in Health & Safety



# Organisational Chart





## Mission

Our mission is to provide high quality, innovative solutions in a way that gives value for money and exceeds our customers' expectations.



## Vision

Queensland Glass will inspire its employees to be the best they can be through continuous improvements of our service and delivery. We will engage in sustainable practices and anticipate the needs of our customers. We will maximize returns to our shareholders while still maintaining quality in our products.



## Contact Us

8 Radar St Lytton QLD 4178  
PO Box 253 Cannon Hill QLD 4170  
Phone: +61 7 3890 6099  
[queenslandglass.com.au](http://queenslandglass.com.au)